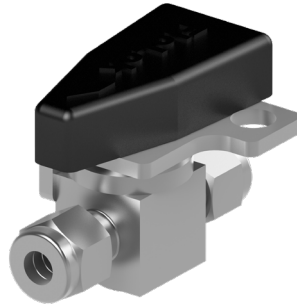


# Installation Instructions


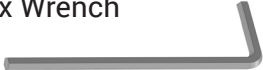
## Plug Valve Locking Kit

**WARNING**  
If the valve is disconnected from a system for installation, it must be depressurized, cycled, and purged.

**WARNING**  
To be used with padlock shackle diameters of 1/4" to 5/16" only.

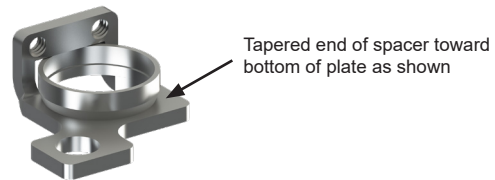


LDSSK Assembly

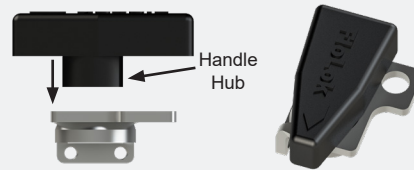
Version	Contents
LDSSK	<ul style="list-style-type: none"> <li>• Installation Instructions</li> <li>• Locking Device Plate</li> <li>• Locking Device Spacer</li> <li>• Set Screws (2)</li> </ul> 
	Tools Required
	<ul style="list-style-type: none"> <li>• 5/64" Hex Wrench</li> <li>• 3/32" Hex Wrench</li> </ul> 

### LDSSK Instructions

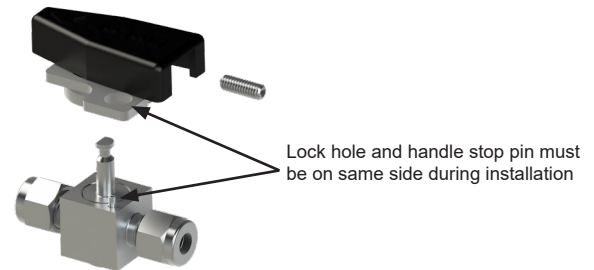
1. Nest the locking device spacer into the locking device plate.



2. Insert handle hub into the locking device sub-assembly from previous step. Orient handle tail to lock hole as shown.



3. Place locking handle sub-assembly onto stem of plug and install the set screw into the handle using a 3/32" hex wrench so that it attaches the handle to the plug



4. Install locking device set screws into locking device plate using a 5/64" hex wrench and lightly tighten until screws contact body and are even.  
**(Do not over-tighten set screws)**



**Note:** Screws may be preinstalled in locking device plate