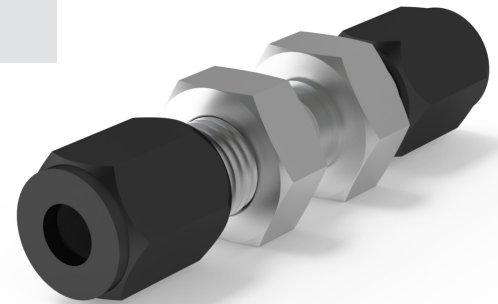


## Ordering Instructions

- ① For Assembled Fittings add A to the base part number. *Example: AM6-8GCV*
- ② Select the Family Designation. *Example: AM6-8GCV*
- ③ Select the size designators. Tube size first, then second and third ends if applicable.  
*Example: AM6-8GCV*
- ④ Select the Shape. *Example: AM6-8GCV*
- ⑤ Select any special modifiers. *Example: AM6-8GCV*



(Assembly)



**B**

Family Designation	
M	SAE Flareless

**C**

Tube Size	
2	1/8 in.
3	3/16 in.
4	1/4 in.
5	5/16 in.
6	3/8 in.
8	1/2 in.
10	5/8 in.
12	3/4 in.
14	7/8 in.
16	1 in.
20	1-1/4 in.
24	1-1/2 in.
32	2 in.

**D**

Shape	
BBT	Bulkhead Branch Tee with Bulkhead Nut
BE	Bulkhead Elbow with Bulkhead Nut
BRT	Bulkhead Run Tee with Bulkhead Nut
BU	Bulkhead Union with Bulkhead Nut
C	Tube to Male Pipe Thread
E	Union Elbow
FC	Tube to SAE Straight Thread
GBT	SAE Straight Thread Branch Tee
GC	Tube to SAE Straight Thread
GRT	SAE Straight Thread Run Tee
ME	Tube to Male Pipe Thread Elbow
SBT	Female Swivel Branch Tee
SC	Female Swivel Straight
SE	Female Swivel Elbow
SRT	Female Swivel Run Tee
T	Union Tee
TFT	Tube to Female Pipe Thread Run Tee
TMT	Tube to Male Pipe Thread Tee
TTF	Tube to Female Pipe Thread Branch Tee
TTM	Tube to Male Pipe Thread Branch Tee
U	Union
X	Union Cross

**E**

Special Modifiers	
BSSP	British Standard Pipe Parallel
BSPT	British Standard Pipe Tapered
-45	45° Elbow
M	Alloy 400
V	FKM O-Ring

\*All SAE Flareless "M" come standard with Buna O-Rings